

Underfloor Trunking Raisedfloor Trunking Flushfloor Trunking



LIFTING HANDLE

PERFORMANCE CABLE
T GROMMET

HINGE COVER

LEVELING SCREW

BASE FRAME
(One unit die-cast)

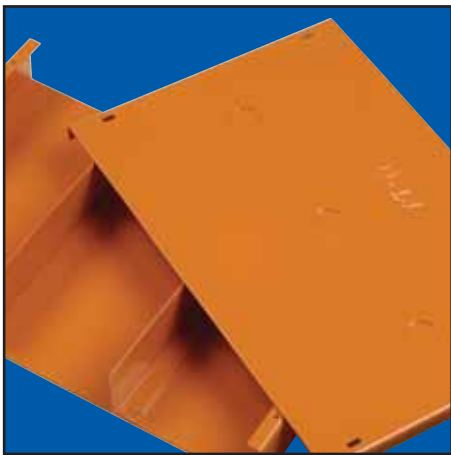
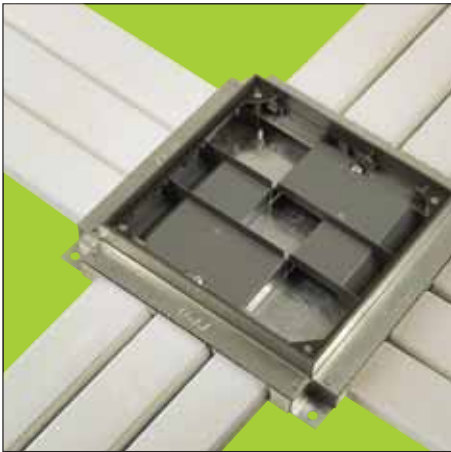
LEVELING SCREW

SIDE BLANK
(Prepunched to order)

PULL



Contents



contents

Underfloor Trunking

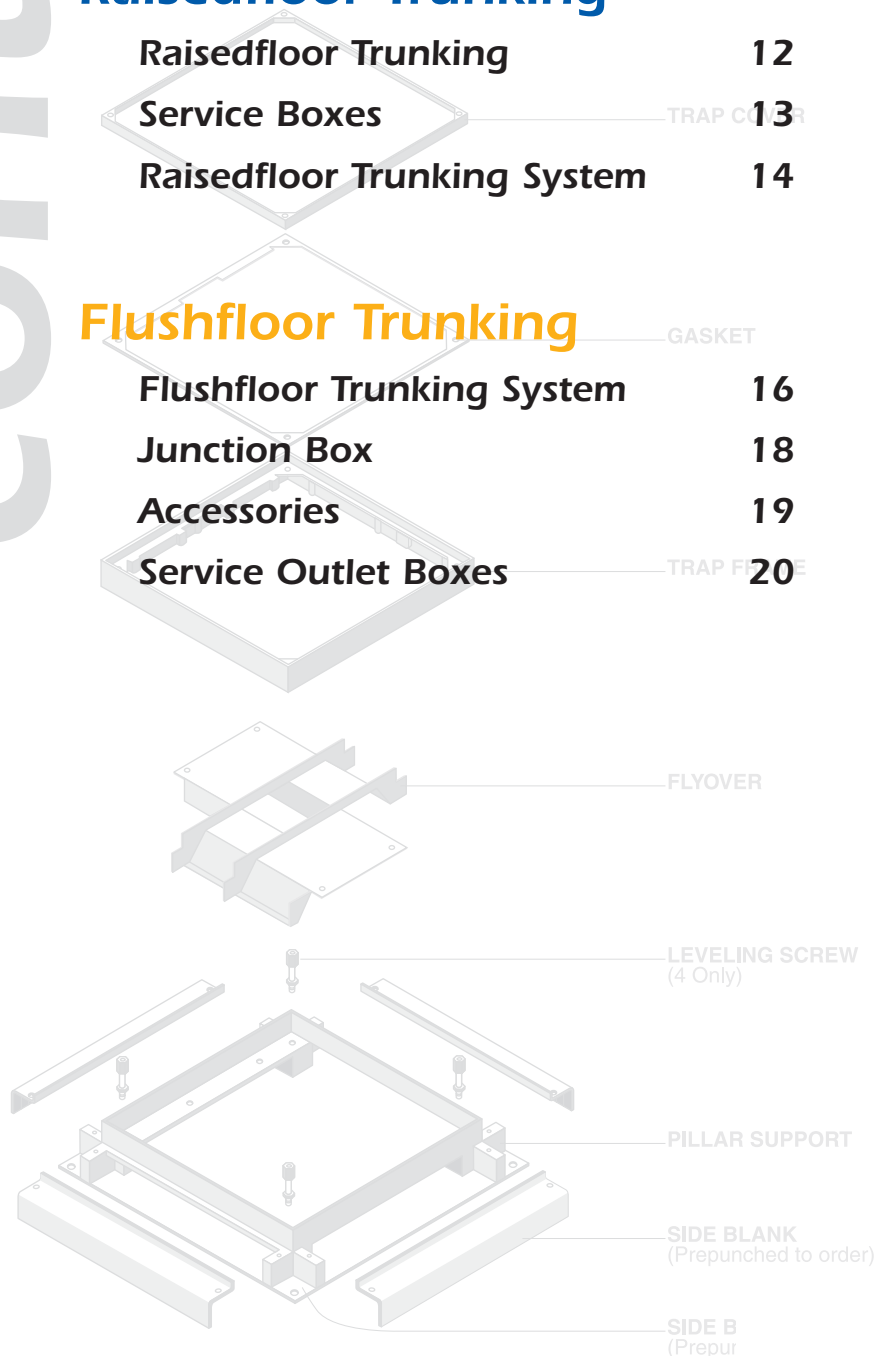
| | |
|----------------------------|----|
| Ducting and Accessories | 4 |
| Metal Trunking | 5 |
| Junction Box | 6 |
| Junction Box Exploded View | 7 |
| Service Boxes | 8 |
| Underfloor Trunking System | 10 |

Raisedfloor Trunking

| | |
|-----------------------------|----|
| Raisedfloor Trunking | 12 |
| Service Boxes | 13 |
| Raisedfloor Trunking System | 14 |

Flushfloor Trunking

| | |
|----------------------------|----|
| Flushfloor Trunking System | 16 |
| Junction Box | 18 |
| Accessories | 19 |
| Service Outlet Boxes | 20 |



Underfloor Trunking



Ducting and Accessories

Material: Heavy gauge high impact uPVC
Standard length: 2.9 metres
Hight: 25mm



uPVC Underfloor Trunking

| Product Code | Description |
|--------------|----------------------|
| UFD 225 W | 25 H x 50 W x 2.5 T |
| UFD 325 W | 25 H x 75 W x 2.5 T |
| UFD 332 W | 25 H x 75 W x 3.2 T |
| UFD 427 W | 25 H x 100 W x 2.7 T |
| UFD 432 W | 25 H x 100 W x 3.2 T |

Vertical Access

The vertical access box helps to facilitate easy accessibility from floor ducts to wall ducts. This is for connections to distribution boards or other floors.



Underfloor Vertical Access Box

25mm Depth (L-Shape)

| Product Code | Description |
|--------------|-----------------------------------|
| UL-LVB 250/2 | 25 to 50 H x 250 W 2 Compartments |
| UL-LVB 250/3 | 25 to 50 H x 250 W 3 Compartments |
| UL-LVB 300/2 | 25 to 50 H x 300 W 2 Compartments |
| UL-LVB 300/2 | 25 to 50 H x 300 W 3 Compartments |

32mm Depth (L-Shape)

| Product Code | Description |
|--------------|-----------------------------------|
| UL-MVB 250/2 | 32 to 50 H x 250 W 2 Compartments |
| UL-MVB 250/3 | 32 to 50 H x 250 W 3 Compartments |
| UL-MVB 300/2 | 32 to 50 H x 300 W 2 Compartments |
| UL-MVB 300/2 | 32 to 50 H x 300 W 3 Compartments |

38mm Depth (L-Shape)

| Product Code | Description |
|--------------|-----------------------------------|
| UL-HVB 250/2 | 38 to 50 H x 250 W 2 Compartments |
| UL-HVB 250/3 | 38 to 50 H x 250 W 3 Compartments |
| UL-HVB 300/2 | 38 to 50 H x 300 W 2 Compartments |
| UL-HVB 300/2 | 38 to 50 H x 300 W 3 Compartments |



Underfloor Vertical Access Box

25mm Depth (Slanting)

| Product Code | Description |
|---------------|-----------------------------------|
| UL-LVBs 250/2 | 25 to 50 H x 250 W 2 Compartments |
| UL-LVBs 250/3 | 25 to 50 H x 250 W 3 Compartments |
| UL-LVBs 300/2 | 25 to 50 H x 300 W 2 Compartments |
| UL-LVBs 300/2 | 25 to 50 H x 300 W 3 Compartments |

32mm Depth (Slanting)

| Product Code | Description |
|---------------|-----------------------------------|
| UL-MVBs 250/2 | 32 to 50 H x 250 W 2 Compartments |
| UL-MVBs 250/3 | 32 to 50 H x 250 W 3 Compartments |
| UL-MVBs 300/2 | 32 to 50 H x 300 W 2 Compartments |
| UL-MVBs 300/2 | 32 to 50 H x 300 W 3 Compartments |

32mm Depth (Slanting)

| Product Code | Description |
|---------------|-----------------------------------|
| UL-HVBs 250/2 | 38 to 50 H x 250 W 2 Compartments |
| UL-HVBs 250/3 | 38 to 50 H x 250 W 3 Compartments |
| UL-HVBs 300/2 | 38 to 50 H x 300 W 2 Compartments |
| UL-HVBs 300/2 | 38 to 50 H x 300 W 3 Compartments |

TRUNKING

Metal Trunking

Material: Galvanised sheet steel to BS2989

Standard thickness: 1.6mm

Standard lengths: 2.44 metres or 3.0 metres single, two or triple compartments

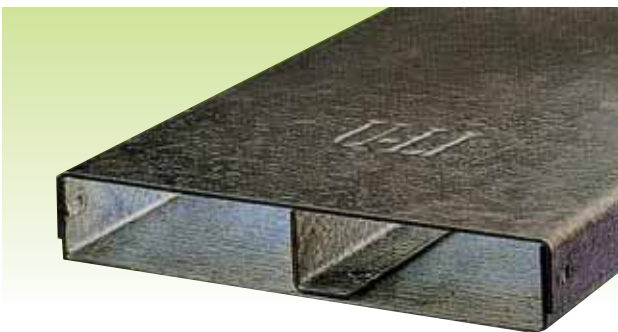
Standard depths: 25mm, 32mm and 38mm

Cut to length can be arranged and is subject to price confirmation and availability



UL-UFL

| List No. | Description |
|----------------|---------------------------------|
| UL-UFL 50/1/6 | 50 x 25 x 1.6mm 1 Compartment |
| UL-UFL 75/1/6 | 75 x 25 x 1.6mm 1 Compartment |
| UL-UFL 100/1/6 | 100 x 25 x 1.6mm 1 Compartment |
| UL-UFL 150/2/6 | 100 x 25 x 1.6mm 2 Compartments |
| UL-UFL 150/3/6 | 150 x 25 x 1.6mm 3 Compartments |
| UL-UFL 200/2/6 | 200 x 25 x 1.6mm 2 Compartments |
| UL-UFL 225/3/6 | 225 x 25 x 1.6mm 3 Compartments |
| UL-UFL 250/3/6 | 250 x 25 x 1.6mm 3 Compartments |
| UL-UFL 275/3/6 | 275 x 25 x 1.6mm 3 Compartments |
| UL-UFL 300/3/6 | 300 x 25 x 1.6mm 3 Compartments |



UL-UFM

| List No. | Description |
|----------------|---------------------------------|
| UL-UFM 50/1/6 | 50 x 32 x 1.6mm 1 Compartment |
| UL-UFM 75/1/6 | 75 x 32 x 1.6mm 1 Compartment |
| UL-UFM 100/1/6 | 100 x 32 x 1.6mm 1 Compartment |
| UL-UFM 150/2/6 | 100 x 32 x 1.6mm 2 Compartments |
| UL-UFM 150/3/6 | 150 x 32 x 1.6mm 3 Compartments |
| UL-UFM 200/2/6 | 200 x 32 x 1.6mm 2 Compartments |
| UL-UFM 225/3/6 | 225 x 32 x 1.6mm 3 Compartments |
| UL-UFM 250/3/6 | 250 x 32 x 1.6mm 3 Compartments |
| UL-UFM 275/3/6 | 275 x 32 x 1.6mm 3 Compartments |
| UL-UFM 300/3/6 | 300 x 32 x 1.6mm 3 Compartments |



UL-UFH

| List No. | Description |
|----------------|---------------------------------|
| UL-UFH 50/1/6 | 50 x 38 x 1.6mm 1 Compartment |
| UL-UFH 75/1/6 | 75 x 38 x 1.6mm 1 Compartment |
| UL-UFH 100/1/6 | 100 x 38 x 1.6mm 1 Compartment |
| UL-UFH 150/2/6 | 100 x 38 x 1.6mm 2 Compartments |
| UL-UFH 150/3/6 | 150 x 38 x 1.6mm 3 Compartments |
| UL-UFH 200/2/6 | 200 x 38 x 1.6mm 2 Compartments |
| UL-UFH 225/3/6 | 225 x 38 x 1.6mm 3 Compartments |
| UL-UFH 250/3/6 | 250 x 38 x 1.6mm 3 Compartments |
| UL-UFH 275/3/6 | 275 x 38 x 1.6mm 3 Compartments |
| UL-UFH 300/3/6 | 300 x 38 x 1.6mm 3 Compartments |

Underfloor Trunking is designed to be positioned on a concrete slab and completely covered by the floor screed.

Junction Box

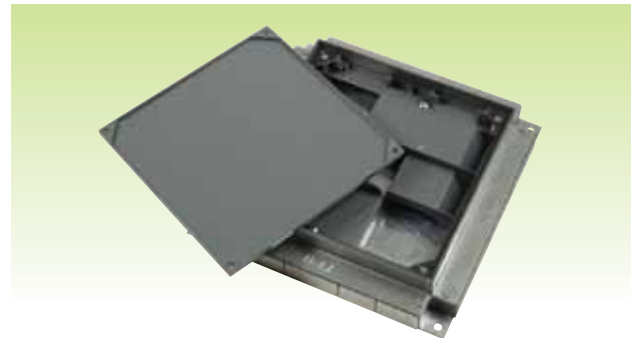
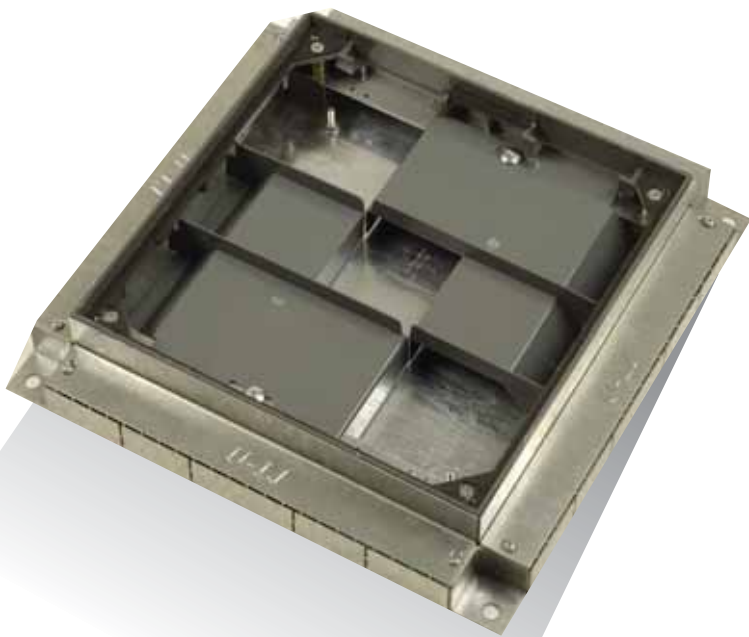
U-LI junction boxes are specially designed to facilitate cabling management in high rise buildings. U-LI junction boxes consists of three main features:

- **Box base frame**
- **Flyover bridge**
- **Trap and frame**

The box frame is made of high pressure die-cast zinc alloy, a non-ferrous and rust-proof material.

The flyover bridge can be fabricated from ABS plastic or eletro-galvanised steel with powder coating to give it a good finishing. The flyover bridge which is used to segregate all the service cables can be supplied in two or three compartments.

The trap and frame are made of high pressure die-cast zinc alloy and is powder coated to further enhance the rust resistance and good appearance. The trap and frame are secured by countersunk nickel plated screws recessed 6mm and 9mm to enable it to accept carpet or vinyl tile finishing.



Junction Box For

Max. 25mm Depth Ductings

| Product Code | Description |
|----------------|--------------------------------------|
| UL-UFJBL 250/2 | 250 x 250 x 56 - 72mm 2 Compartments |
| UL-UFJBL 250/3 | 250 x 250 x 56 - 72mm 3 Compartments |
| UL-UFJBL 300/2 | 300 x 300 x 56 - 72mm 2 Compartments |
| UL-UFJBL 300/3 | 300 x 300 x 56 - 72mm 3 Compartments |
| UL-UFJBL 325/3 | 325 x 325 x 56 - 72mm 3 Compartments |

Max. 32mm Depth Ductings

| Product Code | Description |
|---------------|--------------------------------------|
| UL-UJBM 250/2 | 250 x 250 x 75 - 90mm 2 Compartments |
| UL-UJBM 250/3 | 250 x 250 x 75 - 90mm 3 Compartments |
| UL-UJBM 300/2 | 300 x 300 x 75 - 90mm 2 Compartments |
| UL-UJBM 300/3 | 300 x 300 x 75 - 90mm 3 Compartments |
| UL-UJBM 325/3 | 325 x 325 x 75 - 90mm 3 Compartments |

Max. 38mm Depth Ductings

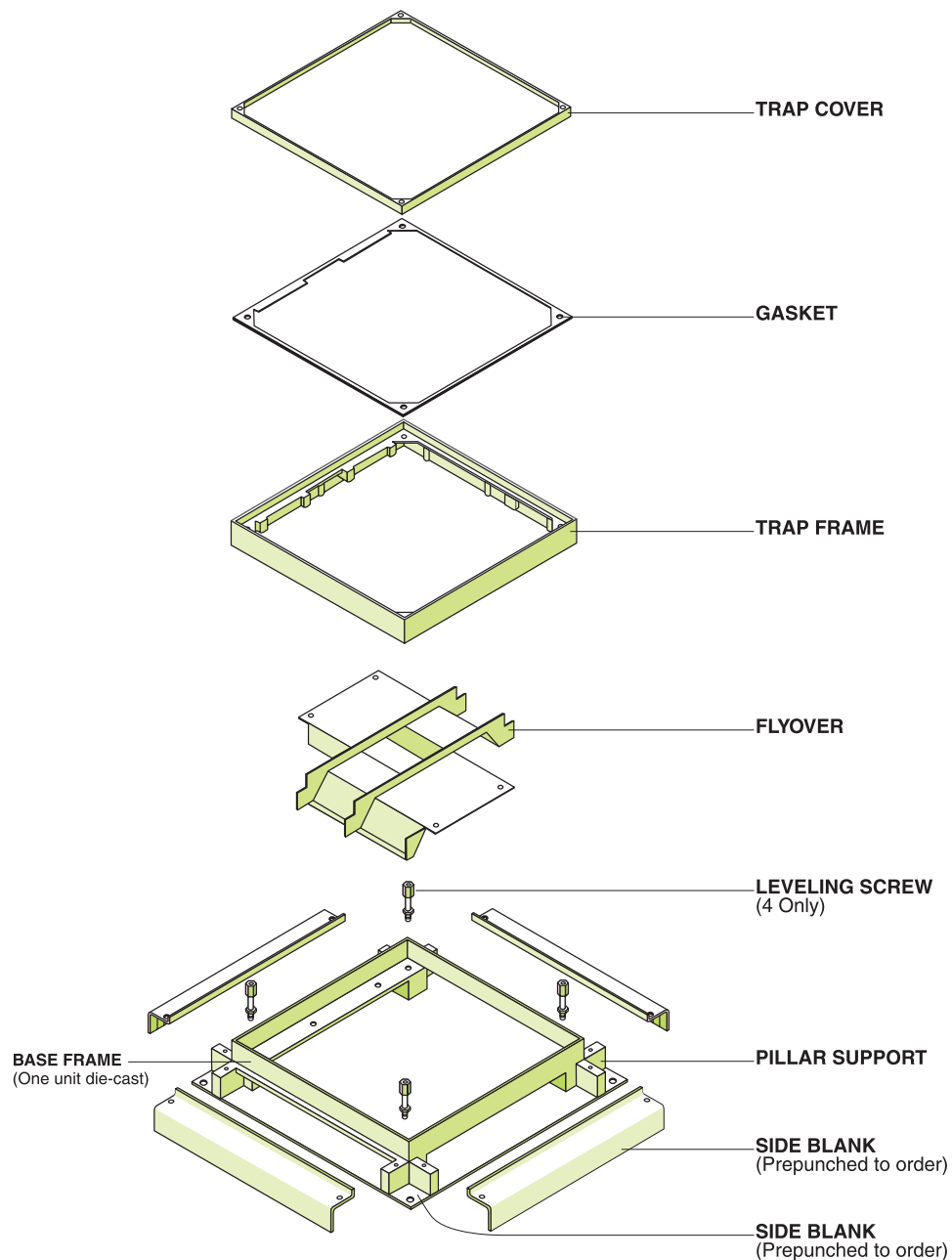
| Product Code | Description |
|---------------|--------------------------------------|
| UL-UJBH 250/1 | 250 x 125 x 75 - 95mm 1 Compartment |
| UL-UJBH 250/2 | 250 x 250 x 75 - 95mm 2 Compartments |
| UL-UJBH 250/3 | 250 x 250 x 75 - 95mm 3 Compartments |
| UL-UJBH 300/2 | 300 x 300 x 75 - 95mm 2 Compartments |
| UL-UJBH 300/3 | 300 x 300 x 75 - 95mm 3 Compartments |
| UL-UJBH 325/3 | 325 x 325 x 75 - 95mm 3 Compartments |

TRUNKING

Exploded View

- Adjustable upwards by 15mm
- Overall depth 56mm for 25mm trunking
- Overall depth 75mm for 38mm trunking
- Lid recess 6mm and 9mm for carpet or vinyl can be fitted

The Junction Box comes complete with 4 Conduit Knockout Plates and 4 Trunking Entry Plates. It can be used as a terminal, through, bend, tee, fourway or conduit box. Flyover is also supplied.



Service Outlet Box

Overall Depth:

56mm for 25mm trunking
75mm for 32mm/38mm trunking

Standard Finish:

Epoxy Powder Coated

The Service Box comes with 3 Conduit Knockout Plates and 3 Trunking Entry Plates. It can be used as a through terminal or conduit outlet module.

Outlet Plates

Must be ordered separately from Service Outlet Module.

Leveling Screw

| Product Code | Description |
|--------------|----------------------------------|
| UL-LS95 | leveling adjustable from 110-130 |
| UL-LS60 | leveling adjustable from 75-100 |
| UL-LS38 | leveling adjustable from 56-75 |



Service Outlet Box For

Max. 32mm Depth Ductings

| Product Code | Description |
|------------------|---|
| UL-UFSBM 250/2/1 | 250 x 250 x 75 - 95mm 2 Compartments 1 Trap |
| UL-UFSBM 250/3/1 | 250 x 250 x 75 - 95mm 3 Compartments 1 Trap |
| UL-UFSBM 300/2/1 | 300 x 300 x 75 - 95mm 2 Compartments 1 Trap |
| UL-UFSBM 300/3/1 | 300 x 300 x 75 - 95mm 3 Compartments 1 Trap |
| UL-UFSBM 325/3/1 | 325 x 325 x 75 - 95mm 3 Compartments 1 Trap |



Service Outlet Box For

Max. 25mm Depth Ductings

| Product Code | Description |
|------------------|---|
| UL-UFSBL 250/2/1 | 250 x 250 x 56 - 72mm 2 Compartments 1 Trap |
| UL-UFSBL 250/3/1 | 250 x 250 x 56 - 72mm 3 Compartments 1 Trap |
| UL-UFSBL 300/2/1 | 300 x 300 x 56 - 72mm 2 Compartments 1 Trap |
| UL-UFSBL 300/3/1 | 300 x 300 x 56 - 72mm 3 Compartments 1 Trap |
| UL-UFSBL 325/3/1 | 325 x 325 x 56 - 72mm 3 Compartments 1 Trap |



Service Outlet Box For

Max. 38mm Depth Ductings

| Product Code | Description |
|-----------------|---|
| UL-USBH 250/2/1 | 250 x 250 x 75 - 90mm 2 Compartments 1 Trap |
| UL-USBH 250/3/1 | 250 x 250 x 75 - 90mm 3 Compartments 1 Trap |
| UL-USBH 300/2/1 | 300 x 300 x 75 - 90mm 2 Compartments 1 Trap |
| UL-USBH 300/3/1 | 300 x 300 x 75 - 90mm 3 Compartments 1 Trap |
| UL-USBH 325/3/1 | 325 x 325 x 75 - 90mm 3 Compartments 1 Trap |

TRUNKING

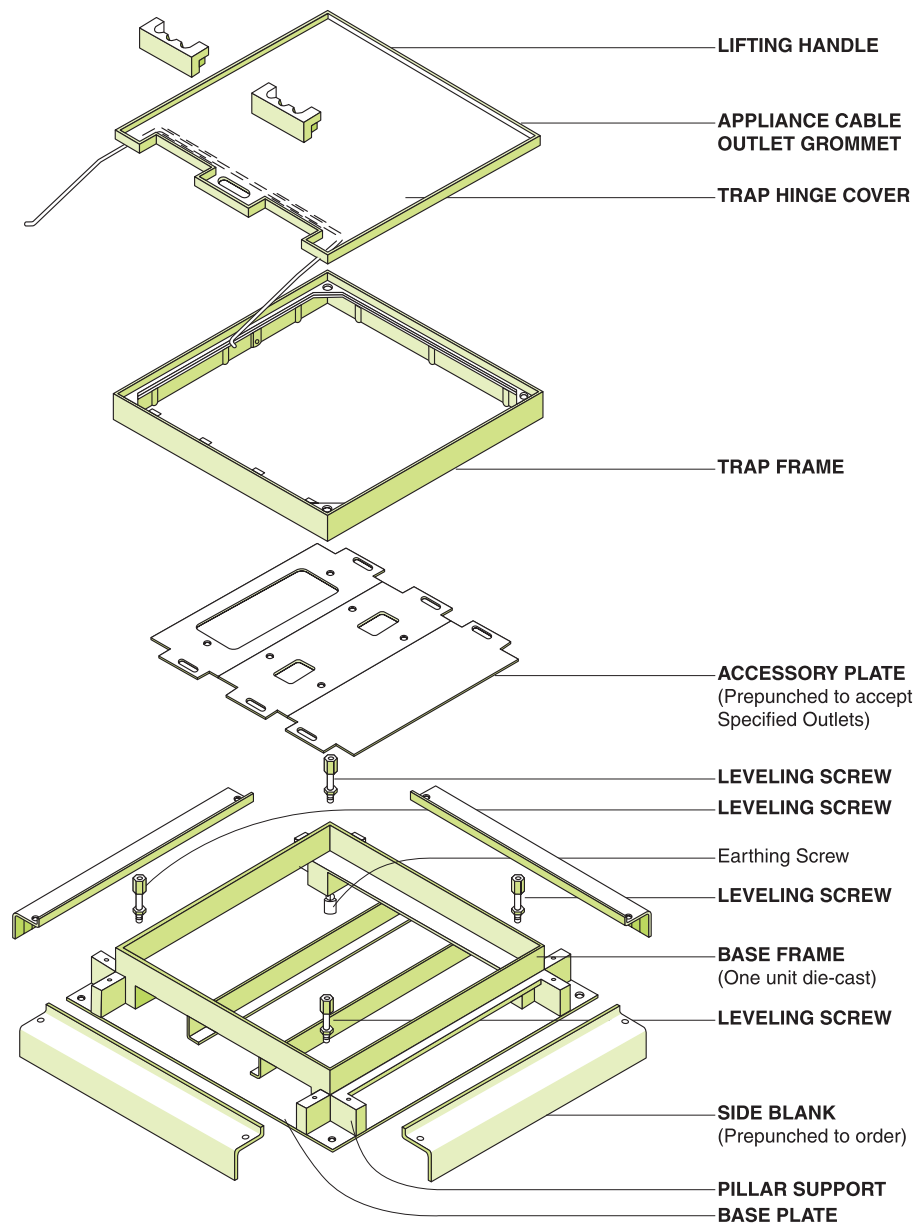
Service Outlet Box

U-LI Service boxes are specially designed to segregate cables for power, telephone and computer circuits. The service box is provided with a service outlet plate to be mounted to the necessary outlet. The type and amount of sockets can be tailor made to the requirement of customers.

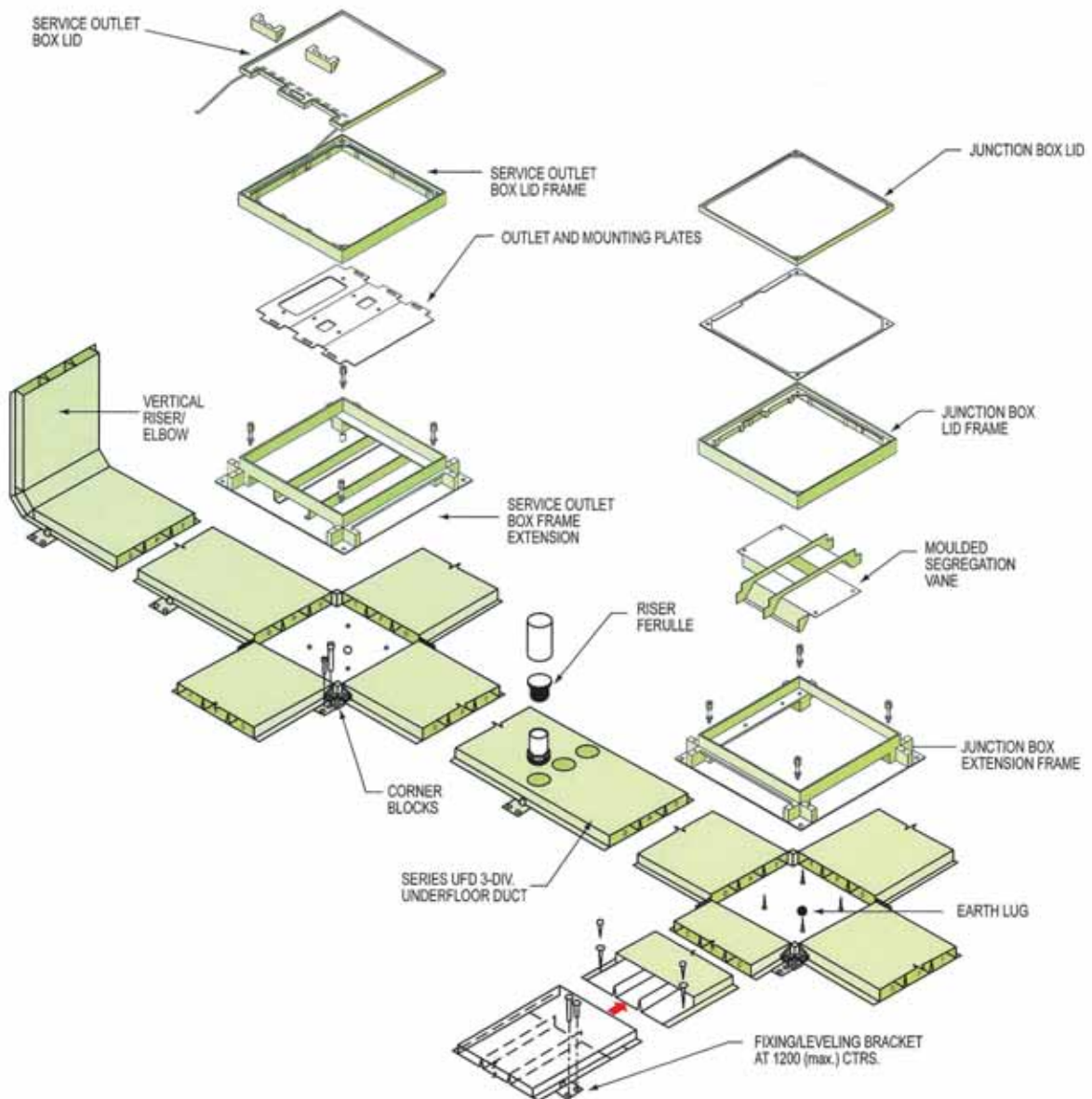
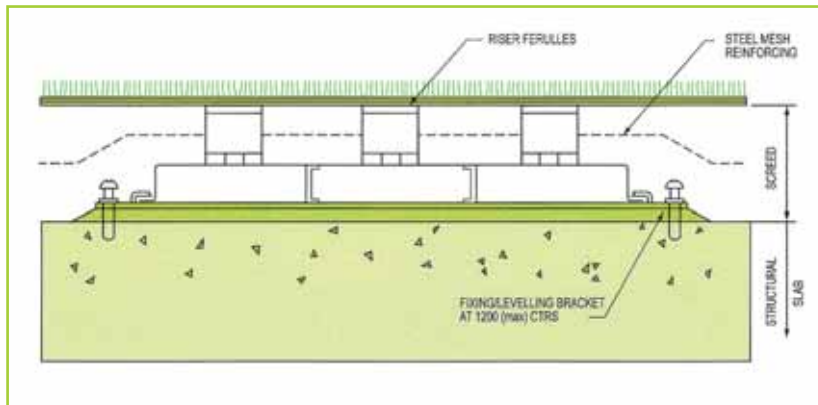
ULI Service boxes consist of three components:

- Box base frame
- Flyover bridge
- Trap and frame

The box base frame, trap and frame, and outlet panel are made of hot dipped galvanised steel sheets which conform to BS 2898. The trap, frame and outlet panel are powder coated to provide a good finish and protection to visible parts. The side plates of the box base are designed to be used for trunking and conduit entries, recessed 6mm and 9mm to enable it to accept carpet or vinyl tile floor finishing.



Underfloor Trunking System



Raisedfloor Trunking



Raisedfloor Trunking

Standard Length:

2.44 / 3.0meter

Standard Finish:

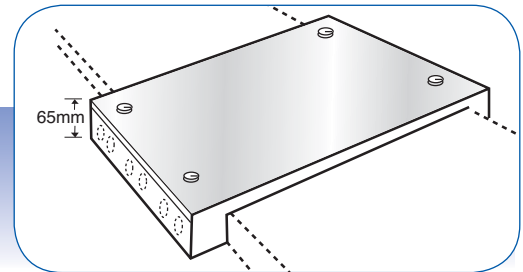
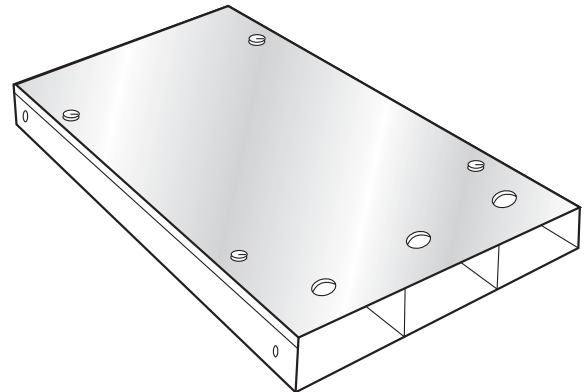
Manufactured from 1.6mm Galvanised Steel to BS2989

Product Codes

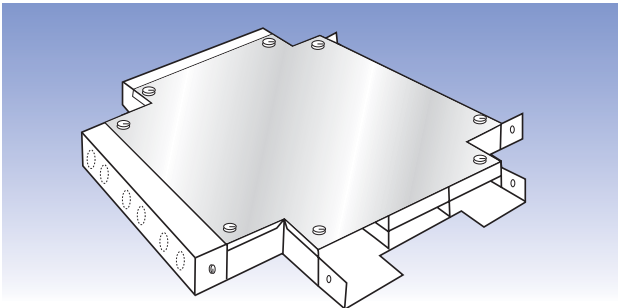
| Size (mm) | 2 Compartment | 3 Compartment |
|-----------|---------------|---------------|
| 200 x 40 | RFT/840/2 | RFT/840/3 |
| 300 x 40 | - | RFT/1240/3 |
| 400 x 40 | - | RFT/1640/3 |

Notes: Other dimensions and variations are available upon request.

The Tap Off Unit can be placed at any position along the Raisedfloor Trunking. It allows a 20mm and 25mm flexible conduit to be connected via knockouts whilst maintaining full segregation.

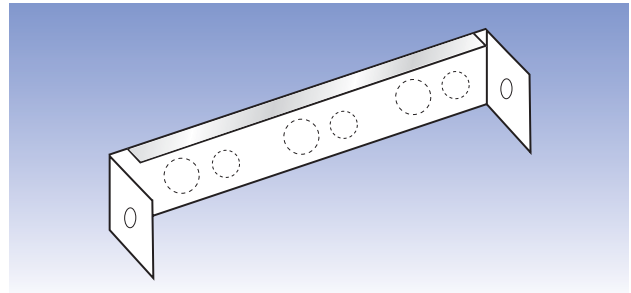


Accessories



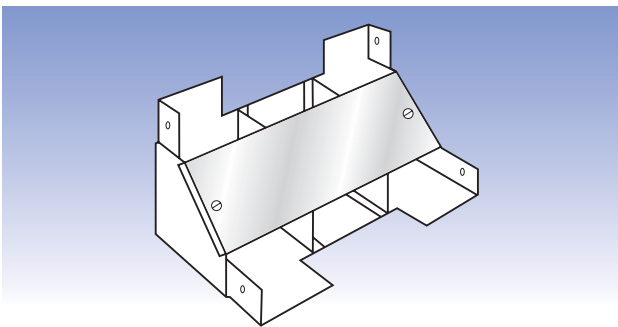
Junction Box

| | |
|---------------|----------------|
| RFJB/(Size)/2 | 2 Compartments |
| RFJB/(Size)/3 | 3 Compartments |



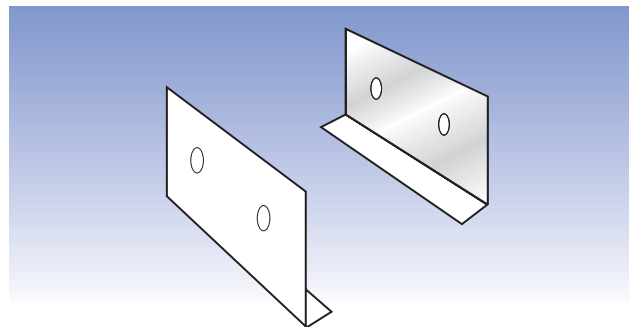
End Cap

| | |
|----------|----------------------------------|
| RFEC/200 | Suitable for 200mm wide trunking |
| RFEC/300 | Suitable for 300mm wide trunking |
| RFEC/400 | Suitable for 400mm wide trunking |



Riser Bend

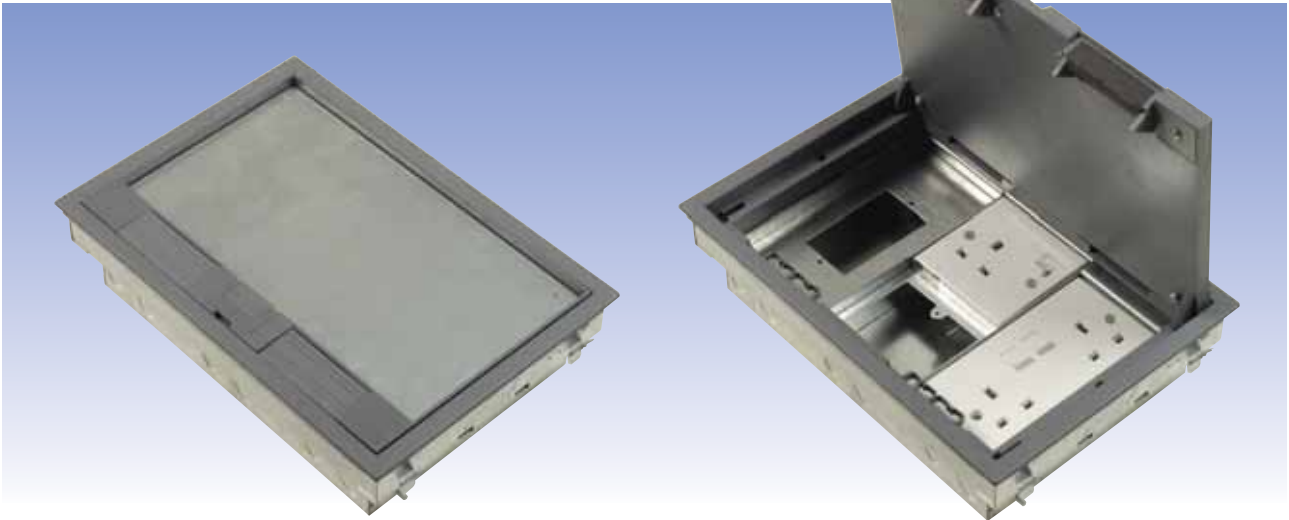
| | |
|---------------|----------------|
| RIB2/(Size)/2 | 2 Compartments |
| RIB2/(Size)/3 | 3 Compartments |



Standard Coupler

| |
|---------|
| RFSC/40 |
|---------|

TRUNKING



Service Outlet Box

UL-RFSB For 2 Compartments

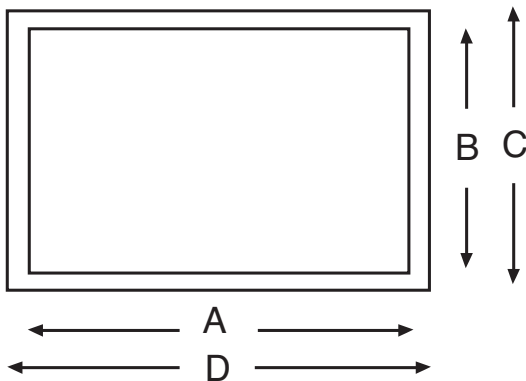
UL-RFSB For 3 Compartments

Standard Finish : Epoxy Powder Coated

Service Outlet Boxes are designed to be suspended from Raisedfloor panels. The aperture required and external dimensions of flange are:

| Product Code | A | B | C | D |
|--------------|-----|-----|-----|-----|
| RFSB/2 | 285 | 195 | 225 | 330 |
| RFSB/3 | 285 | 195 | 225 | 330 |

Overall Depth 85mm



Other sizes are available upon request.

Service Boxes

The U-LI raised service box is designed specially to meet the requirements of a raised access flooring environment. The service box consists of three main components:

- **Box Base Frame**
- **Trap and Frame**
- **Outlet Panel**

The box base frame is manufactured from hot dipped galvanised steel sheets that conform to BS 2898. The three compartment box which carries the outlet panel has provision for knockout holes to facilitate conduit entry to each compartment.

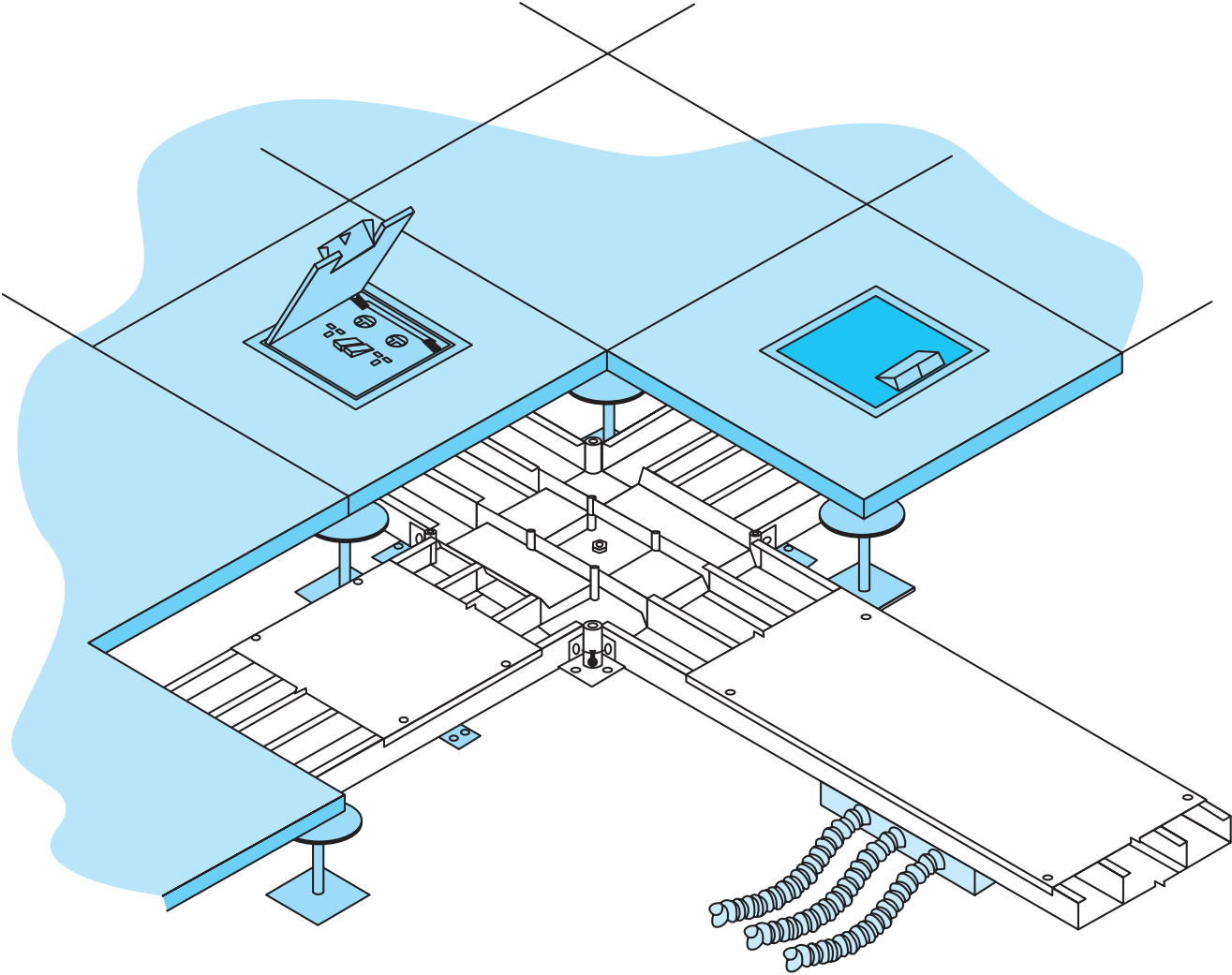
The carpet trim and trap are moulded from polycarbonate which gives it great mechanical strength and excellent impact resistance. The carpet trim and trap are bolted on a hot-dipped galvanised steel frame to increase support strength.

The powder coated outlet panel provides access to power, voice and data outlets. Non-standard service outlet panels are also available on request.



RAISED FLOOR

Raisedfloor Trunking System



Flushfloor Trunking



Flushfloor Trunking System

General

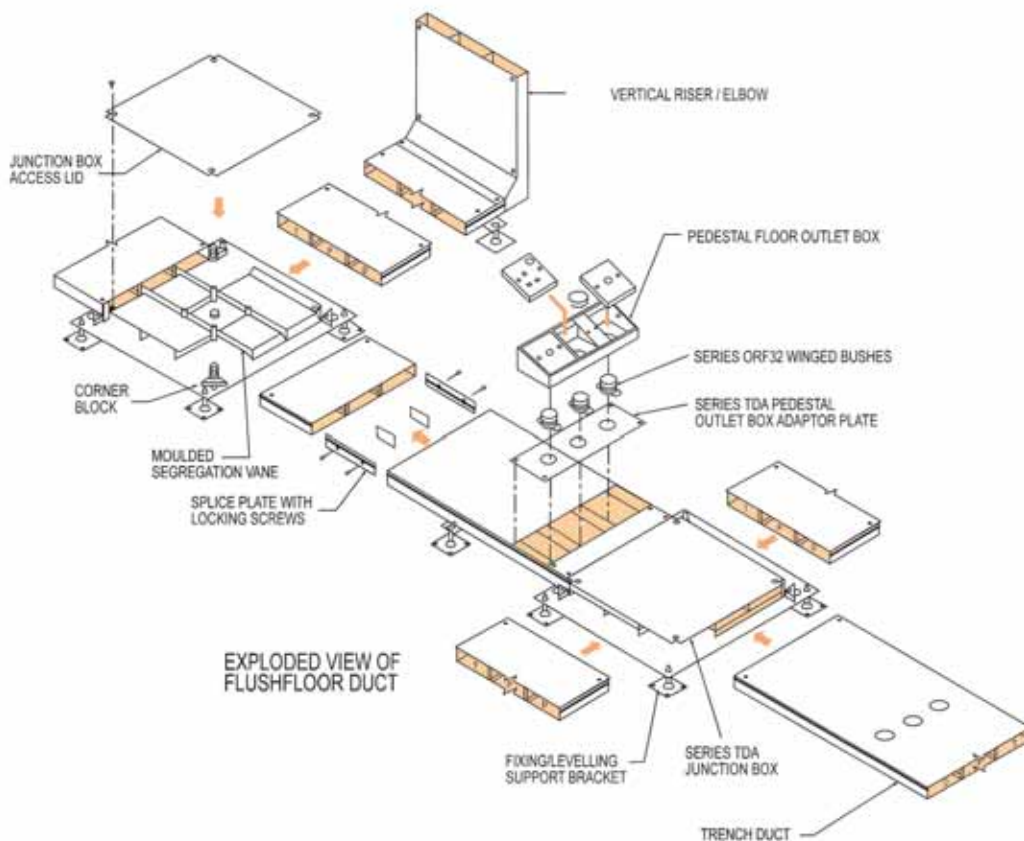
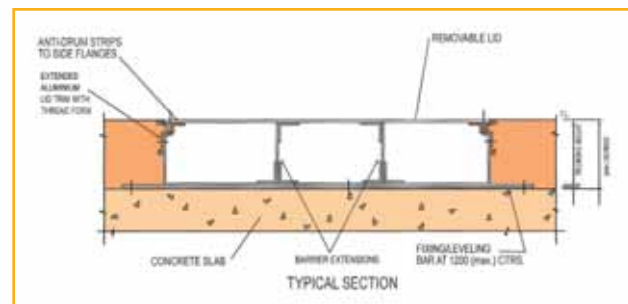
The United U-LI Flushfloor Trunking System is generally used for cable distribution via the flooring within an office space and should be installed complete with all necessary trunking ie; junction box cross or tee with flyover, junction box elbow, service outlet, reducers, vertical access riser and end cap.

The U-LI Flushfloor system comprises of single or multi-way ducts/trunking made of rigid, non corrodeable, galvanized steel sheets. Multiway characteristic that is suitable for use in the distribution of telephone (voice), computer signal (data) and power (electrical) service screeds and is finished in accordance with the layouts shown in the specification drawings.

All compartments are separated by a removable sectionalized separator between compartments for the entire length of the U-LI trunking system. The compartment dividers are easily removed and reinstalled without having to use special tools or modification of parts. For large span compartments, intermediate support is provided to prevent sagging.

U-LI Flushfloor trunking is designed with an extended Aluminium Lid Trimmer complete in thread form so as to allow the fastening of the cover along the entire length of the trunking. A modular design in equal sections to facilitate subsequent removal and interchanging of cover and service outlets.

Any screws, bolts and nuts used in any part of the flushfloor system, particularly at the joint of each trunking and earth links are smooth and should not cause any damage to wiring during installation.



TRUNKING

Flushfloor Trunking with Aluminum Trimming



32mm Height

| Wide | Compartment | Product Codes |
|------|-------------|------------------|
| 150 | 1 | UL-FFT 150/1/A32 |
| 150 | 2 | UL-FFT 150/2/A32 |
| 225 | 2 | UL-FFT 225/2/A32 |
| 225 | 3 | UL-FFT 225/3/A32 |
| 300 | 2 | UL-FFT 300/2/A32 |
| 300 | 3 | UL-FFT 300/3/A32 |

40mm Height

| Wide | Compartment | Product Codes |
|------|-------------|------------------|
| 150 | 1 | UL-FFT 150/1/A40 |
| 150 | 2 | UL-FFT 150/2/A40 |
| 300 | 2 | UL-FFT 300/2/A40 |
| 300 | 3 | UL-FFT 300/3/A40 |

50mm Height

| Wide | Compartment | Product Codes |
|------|-------------|------------------|
| 300 | 2 | UL-FFT 300/2/A50 |
| 300 | 3 | UL-FFT 300/3/A50 |
| 400 | 2 | UL-FFT 400/2/A50 |
| 400 | 3 | UL-FFT 400/3/A50 |

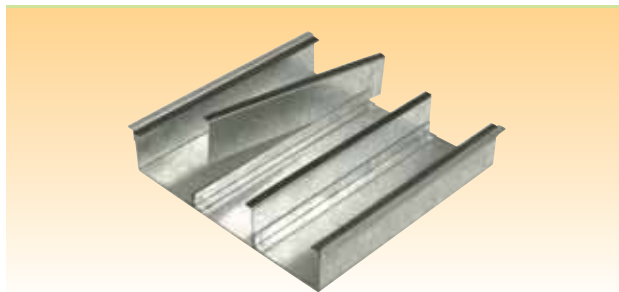
58mm Height with Removable Divider

| Wide | Compartment | Product Codes |
|------|-------------|------------------|
| 300 | 2 | UL-FFT 300/2/A58 |
| 300 | 3 | UL-FFT 300/3/A58 |
| 400 | 2 | UL-FFT 400/2/A58 |
| 400 | 3 | UL-FFT 400/3/A58 |
| 500 | 3 | UL-FFT 500/3/A58 |
| 600 | 3 | UL-FFT 600/3/A58 |

65mm Height with Removable Divider

| Wide | Compartment | Product Codes |
|------|-------------|------------------|
| 300 | 2 | UL-FFT 300/2/A65 |
| 300 | 3 | UL-FFT 300/3/A65 |
| 400 | 2 | UL-FFT 400/2/A65 |
| 400 | 3 | UL-FFT 400/3/A65 |
| 500 | 3 | UL-FFT 500/3/A65 |
| 600 | 3 | UL-FFT 600/3/A65 |

Flushfloor Trunking normal type



32mm Height

| Wide | Compartment | Product Codes |
|------|-------------|------------------|
| 150 | 1 | UL-FFT 150/1/N32 |
| 150 | 2 | UL-FFT 150/2/N32 |
| 225 | 2 | UL-FFT 225/2/N32 |
| 225 | 3 | UL-FFT 225/3/N32 |
| 300 | 2 | UL-FFT 300/2/N32 |
| 300 | 3 | UL-FFT 300/3/N32 |

40mm Height

| Wide | Compartment | Product Codes |
|------|-------------|------------------|
| 150 | 1 | UL-FFT 150/1/N40 |
| 150 | 2 | UL-FFT 150/2/N40 |
| 300 | 2 | UL-FFT 300/2/N40 |
| 300 | 3 | UL-FFT 300/3/N40 |

50mm Height

| Wide | Compartment | Product Codes |
|------|-------------|------------------|
| 300 | 2 | UL-FFT 300/2/N50 |
| 300 | 3 | UL-FFT 300/3/N50 |
| 400 | 2 | UL-FFT 400/2/N50 |
| 400 | 3 | UL-FFT 400/3/N50 |

58mm Height with Removable Divider

| Wide | Compartment | Product Codes |
|------|-------------|------------------|
| 300 | 2 | UL-FFT 300/2/N58 |
| 300 | 3 | UL-FFT 300/3/N58 |
| 400 | 2 | UL-FFT 400/2/N58 |
| 400 | 3 | UL-FFT 400/3/N58 |
| 500 | 3 | UL-FFT 500/3/N58 |
| 600 | 3 | UL-FFT 600/3/N58 |

65mm Height with Removable Divider

| Wide | Compartment | Product Codes |
|------|-------------|------------------|
| 300 | 2 | UL-FFT 300/2/N65 |
| 300 | 3 | UL-FFT 300/3/N65 |
| 400 | 2 | UL-FFT 400/2/N65 |
| 400 | 3 | UL-FFT 400/3/N65 |
| 500 | 3 | UL-FFT 500/3/N65 |
| 600 | 3 | UL-FFT 600/3/N65 |

Standard length: 2440mm

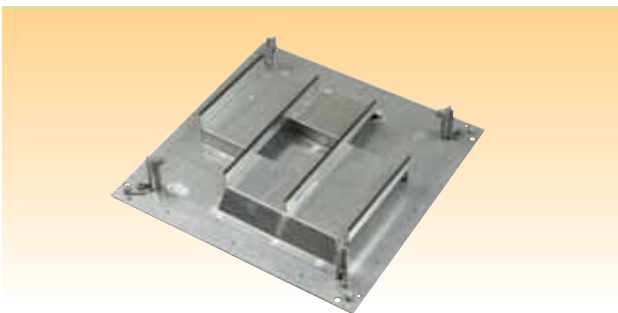
Standard designated length: 406mm, 815mm, 1220mm, 1628mm, 2034mm

Junction Box

U-LI Junction boxes come in options such as Cross, Tee or Elbow and are used after being covered with junction box end caps. The appropriate sized floor junction box can be provided and installed according to requirement.

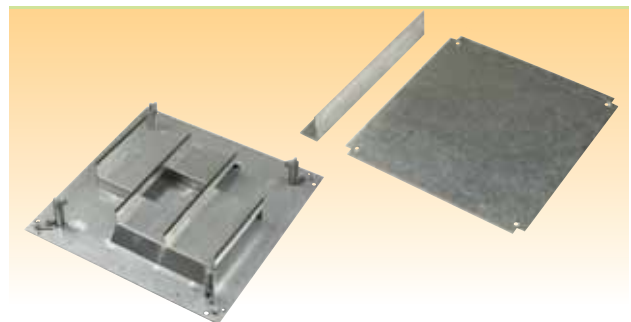
The compartments of each indicated box routings have a 100% cable handling capacity throughout the main trunking without being obstructed by the flyover.

- Cross, tee and elbow junction boxes are supplied with flyovers.
- Body of boxes and elbows are formed from 1.6mm galvanised steel sheets.
- All covers are formed from galvanised steel sheets.
- Cross, tee and elbow boxes are designed on a modular concept to suit flushfloor trunking.



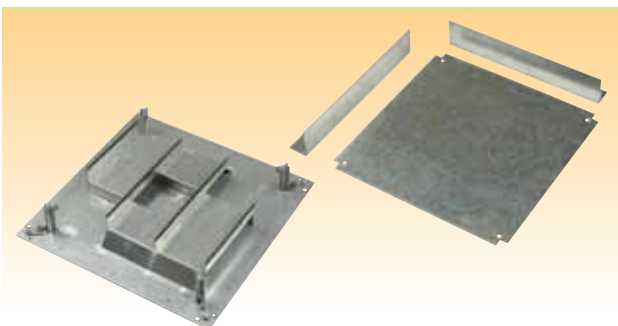
Flushfloor Junction Box Cross

| Product Code | Description |
|-------------------|----------------------------|
| UL-FFT 300/2/(H)X | 300 W x (H) 2 Compartments |
| UL-FFT 300/3/(H)X | 300 W x (H) 3 Compartments |
| UL-FFT 400/3/(H)X | 400 W x (H) 3 Compartments |
| UL-FFT 500/3/(H)X | 500 W x (H) 3 Compartments |
| UL-FFT 600/3/(H)X | 600 W x (H) 3 Compartments |



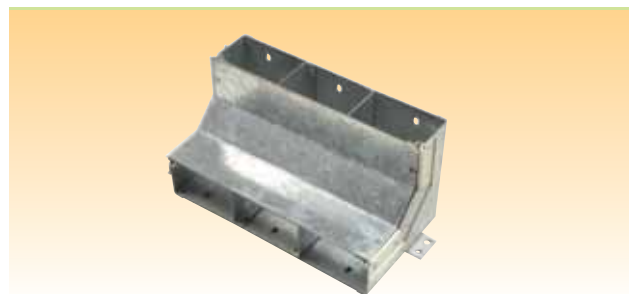
Flushfloor Junction Box Tee

| Product Code | Description |
|-------------------|----------------------------|
| UL-FFT 300/2/(H)T | 300 W x (H) 2 Compartments |
| UL-FFT 300/3/(H)T | 300 W x (H) 3 Compartments |
| UL-FFT 400/3/(H)T | 400 W x (H) 3 Compartments |
| UL-FFT 500/3/(H)T | 500 W x (H) 3 Compartments |
| UL-FFT 600/3/(H)T | 600 W x (H) 3 Compartments |



Flushfloor Elbow Box

| Product Code | Description |
|-------------------|----------------------------|
| UL-FFT 300/2/(H)L | 300 W x (H) 2 Compartments |
| UL-FFT 300/3/(H)L | 300 W x (H) 3 Compartments |
| UL-FFT 400/3/(H)L | 400 W x (H) 3 Compartments |
| UL-FFT 500/3/(H)L | 500 W x (H) 3 Compartments |
| UL-FFT 600/3/(H)L | 600 W x (H) 3 Compartments |



Flushfloor Vertical Access Box

| Product Code | Description |
|-------------------|----------------------------|
| UL-FFT 300/2/(H)V | 300 W x (H) 2 Compartments |
| UL-FFT 300/3/(H)V | 300 W x (H) 3 Compartments |
| UL-FFT 400/3/(H)V | 400 W x (H) 3 Compartments |
| UL-FFT 500/3/(H)V | 500 W x (H) 3 Compartments |
| UL-FFT 600/3/(H)V | 600 W x (H) 3 Compartments |

TRUNKING

Accessories



Reducer

| Product Code | Description |
|------------------|--|
| UL-FFT 300-225 R | Reducer 400 to 300mm 60mm 3 Compartments |
| UL-FFT 225-150 R | Reducer 300 to 155mm 60mm 3 Compartments |
| UL-FFT 200-150 R | Reducer 400 to 300mm 60mm 2 Compartments |
| UL-FFT 200-100 R | Reducer 400 to 300mm 60mm 2 Compartments |
| UL-FFT 150-100 R | Reducer 400 to 300mm 60mm 1 Compartments |

*also available in 32mm and 40mm

*also available in 155, 300 and 400 width.



End Cap

| Product Code | Description |
|--------------|---------------------------------|
| UL-FFT 100 R | End Cap for 100 x 28mm trunking |
| UL-FFT 150 R | End Cap for 150 x 28mm trunking |
| UL-FFT 200 R | End Cap for 200 x 28mm trunking |
| UL-FFT 225 R | End Cap for 225 x 28mm trunking |
| UL-FFT 300 R | End Cap for 300 x 28mm trunking |

*also available in 32mm and 40mm

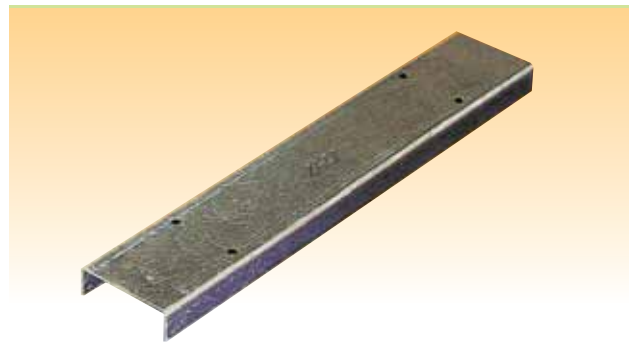
*also available in 155, 300 and 400 width.



Trunking Support Bracket

(Adjustable Type)

| Product Code | Description |
|--------------|------------------|
| UL-FFT 205 | For 155 trunking |
| UL-FFT 330 | For 300 trunking |
| UL-FFT 455 | For 400 trunking |



Trunking Support Bracket

(Fixed Height)

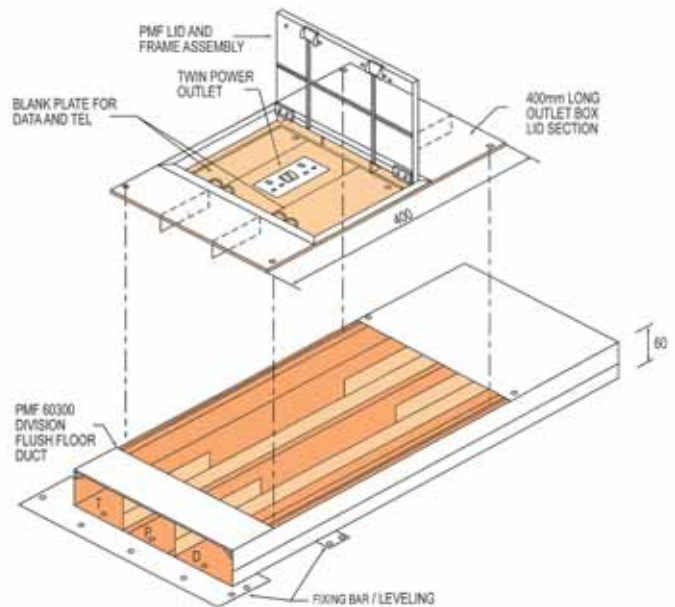
| Product Code | Description |
|--------------|------------------|
| SBF 205 | For 155 trunking |
| SBF 330 | For 300 trunking |
| SBF 455 | For 400 trunking |

Service Outlet Boxes

The United U-LI Flushfloor service outlet trap & frames are constructed from high tensile strength, pressure injected zinc alloy, die cast material. It is protected by an electrostatic coated, high temperature oven baked epoxy powder coating so as to protect all visible parts from stain and rust.

The trap cover is raised with a 6mm – 10mm edge to provide a neatly trimmed area into which carpet or vinyl materials can be fitted.

The 406mm length of the flushfloor service outlet is a concealed type and each module is similar in size with modular trunking covers for interchangeability.

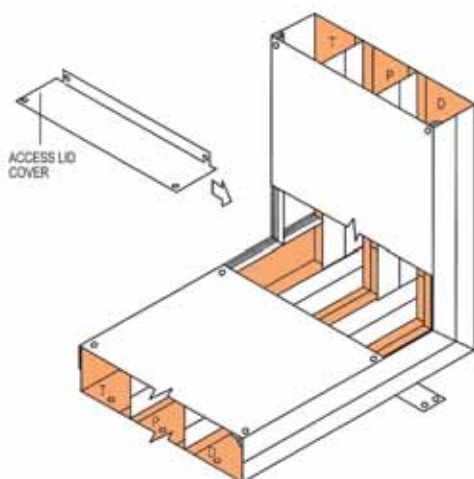


Material

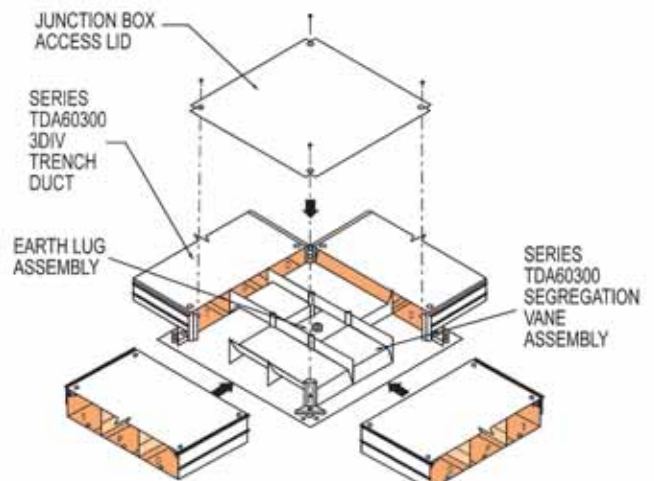
The trunking, junction boxes, modular service boxes, vertical access boxes and etc. are constructed from Pre-Galvanized steel sheets that conform to BS 2989. The thickness of the trunking body is 1.6mm with an aluminium trimming. The thickness for all compartment separators are not less than 1.0mm. The junction box base is not less than 2.0mm and all covers are not less than 2.5mm.



Vertical Access



Junction Box





United U-LI Corporation Berhad

(Company No: 51073711)

(Incorporated in Malaysia Under the Companies Act, 1965)

No. 33, Jalan Kartunis U1/47, Temasya Industrial Park, Seksyen U1, 40150 Shah Alam, Selangor Darul Ehsan, Malaysia

Tel: +(603) 5569 5999 (Hunting Line) Fax: +(603) 5569 1666

email: hq@uli.com.my

website: www.uli.com.my