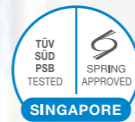




National Mark of Malaysia Brand Award 2014



## SB11 Series

Instant Hot Shower  
Sleek · Stylish · Luxury

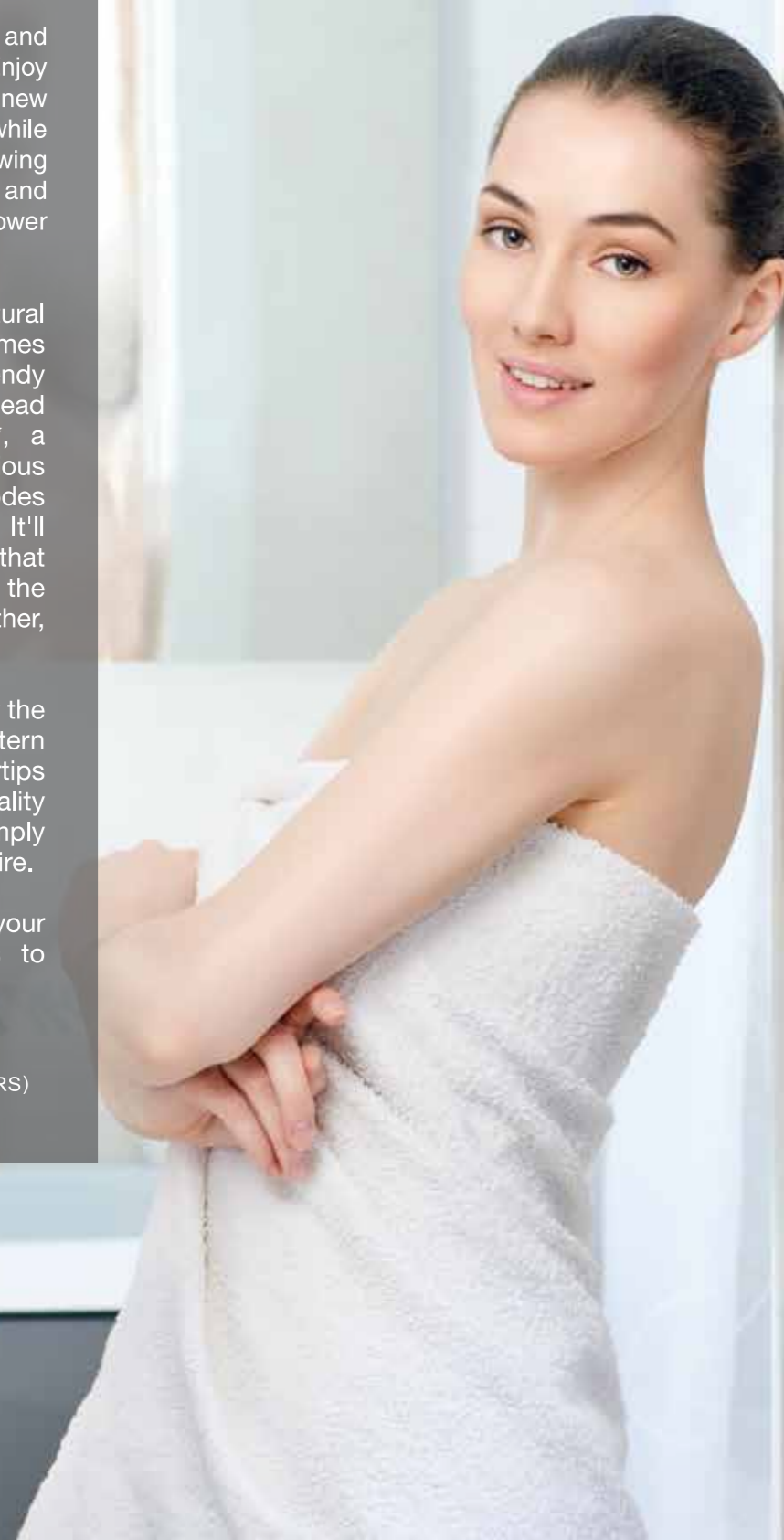
Now you can have tranquillity and peace of mind in one package. Enjoy quieter showers with the all new TURBO Booster Pump, while enjoying the satisfaction of knowing you're still saving on energy and having an exuberating shower sensation.

You'll feel like you're in a natural waterfall because the SB11 comes equipped with an optional trendy 10 Inch Patent Pending Overhead Rotatable Rain Shower set\*, a newly enlarged 4 Inch Luxurious Hand Shower and 3 Modes Shower Selector Valve option. It'll set you in the mood for that experience you desire with the option of using one or the other, even both at the same time.

Above that, you can also enjoy the serenity and comfort of 5 pattern shower option at your fingertips with easy to operate functionality and temperature control. Simply enjoy the temperature you desire.

The SB11 series knows your innermost desires and aims to satisfy in more ways than one,

\*Available only with SB11e(RS), SB11P(RS)



warm hearted, hand crafted

### SOLE DISTRIBUTOR FOR MALAYSIA

**JOVEN MARKETING SDN. BHD.** (356796-V)  
Lot 2829, Jalan Sungai Kelkati 32/148,  
Off Jalan Sri Gambut, Seksyen 32,  
40460 Shah Alam, Selangor Darul Ehsan, Malaysia.  
Tel : +603 5162 6633 (Hunting Line)  
Fax : +603 5162 3636 (General)  
: +603 5162 6634 (After Sales Service)  
Email : jovenmkt@joven.com.my  
Website : www.joven.com.my

### BRANCHES

**PENANG / KEDAH / PERLIS**  
No 7375, 2nd Floor, Jalan Raja Uda,  
12300 Butterworth, Penang  
Tel : +604 332 3018  
Fax : +604 332 3198

### POH

No 96A, 1st Floor, Jalan Tasek Timur,  
Taman Tasek Indra, 31400 Ipoh, Perak  
Tel : +605-545 0302  
Fax : +605-545 0318

### MELAKA

No 65-2, Jalan SP 1,  
Taman Semabok Perdana,  
75050 Semabok, Melaka  
Tel : +606-282 6088  
Fax : +606-282 5088

### MANUFACTURER

**JOVEN ELECTRIC CO. SDN. BHD.** (107915-U)  
Lot 2829, Jalan Sungai Kelkati 32/148,  
Off Jalan Sri Gambut, Seksyen 32,  
40460 Shah Alam, Selangor Darul Ehsan, Malaysia.  
Tel : +603 5162 8000  
Fax : +603 5162 1881  
Email : admin@joven-electric.com  
Website : www.joven-electric.com

### JOHOR BAHRU

8-02, Jalan Kempas Utama 2/2,  
Taman Kempas Utama,  
81200 Johor Bahru, Johor  
Tel : +607-595 3139  
Fax : +607-595 3195

### KOTA BHARU

3180-F, 1st Floor,  
Jalan Sultan Ibrahim,  
15050 Kota Bharu, Kelantan  
Tel : +609-747 9978  
Fax : +609-747 8962

### KUANTAN

A133-2, Jalan Haji Abdul Aziz,  
25000 Kuantan, Pahang  
Tel : +609-531 5456  
Fax : +609-531 5456

### KUCHING

SL8, LRG-7, Ensing Timur,  
Jalan Stapok Timur,  
93250 Kuching, Sarawak  
Tel : +6082-686 559  
Fax : +6082-687 559

### KOTA KINABALU

No.4, Jalan Tombovo-Meruntu,  
Central Industrial Park, Kg. Tombovo,  
Putatan, Penampang,  
88450 Kota Kinabalu, Sabah.  
Tel : +6088-733 700  
: +6088-733 701  
Fax : +6088-733 707

Authorised Dealer

Pictures are for illustration purpose only. Model outlook and specification may change in the future without prior notice.

www.joven.com.my



The All New Silentplus SB11P Instant Hot Shower  
with Rainshower & Turbo Booster Pump



**SB11 Series**  
Instant Hot Shower  
SB11P . SB11P(RS) . SB11e . SB11e(RS)

Sleek · Stylish · Luxury  
Instant Hot Shower

© copyright 12/2017 JOVEN

**JOVEN**  
SINCE 1983  
Bringing Innovation Home™



## BOOSTER PUMP TECHNOLOGY



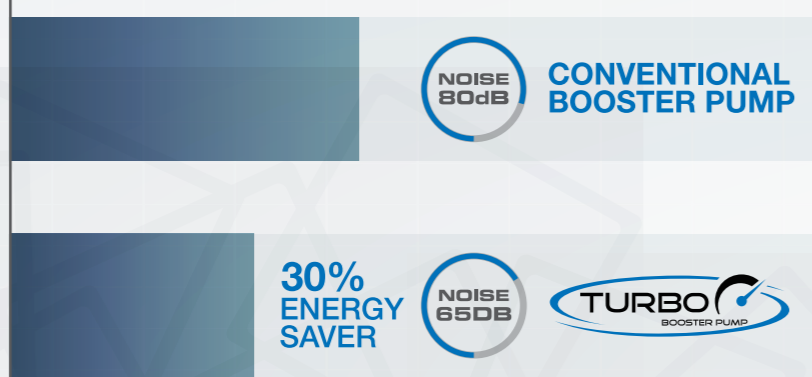
Boost your shower to the ultimate level of performance you desire with the new SB11 Series. Designed with the JOVEN all new TURBO Booster Pump Technology, you'll get fantastic energy saving and silent shower performance at the same time.



Electrical Consumption



Operation Noise

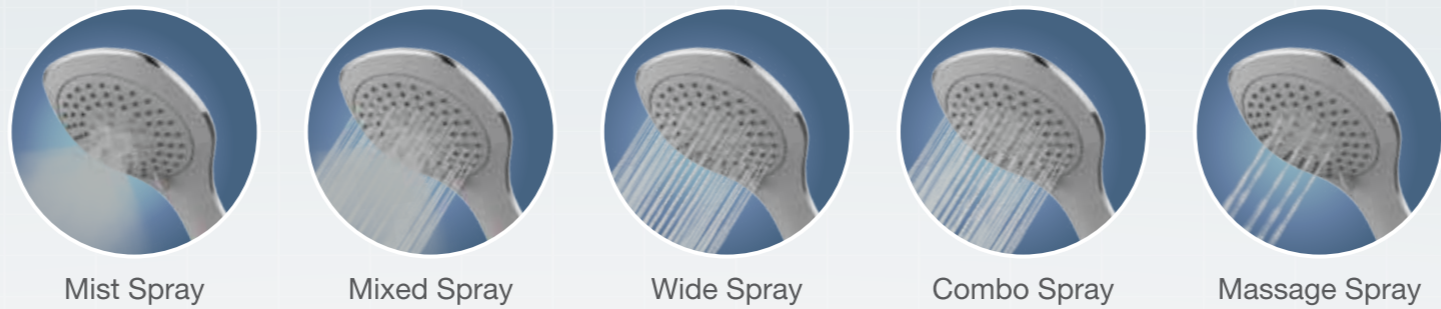


**30% ENERGY SAVING**

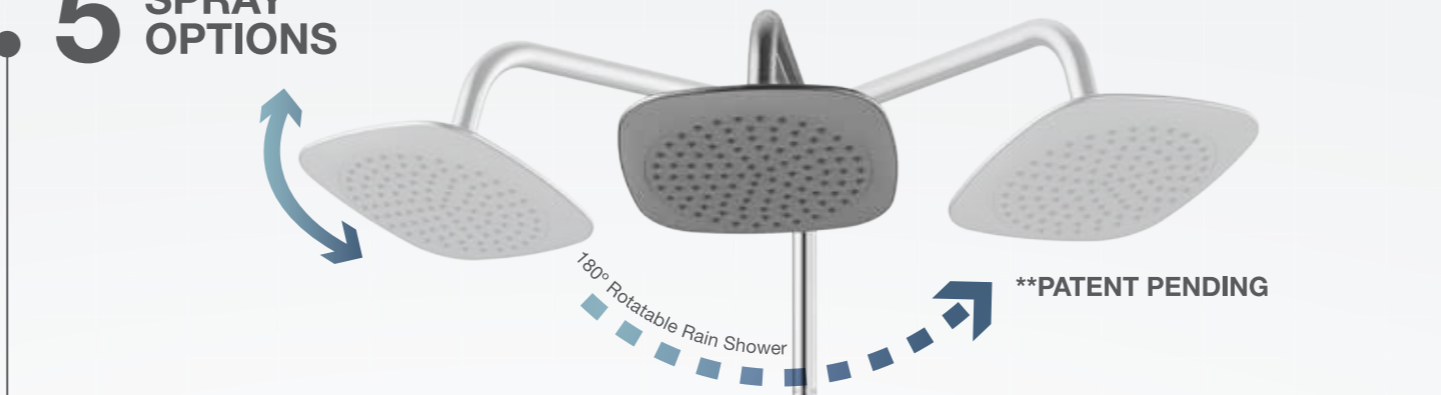
**TURBO BOOSTER PUMP PAT. PEND.**

SB11P & SB11P(RS)

Marvel at the JOVEN all new TURBO Booster Pump which is the 1st in Malaysia that operates in low noise below 65dB and saves electrical energy consumption up to 30% compared to the conventional booster pump. What's more, water pressure is boosted up 4 times stronger compared to normal water pressure.



## 5 SPRAY OPTIONS



## 10" RAIN SHOWER BAR SET FEATURE

## RAIN SHOWER BAR SET



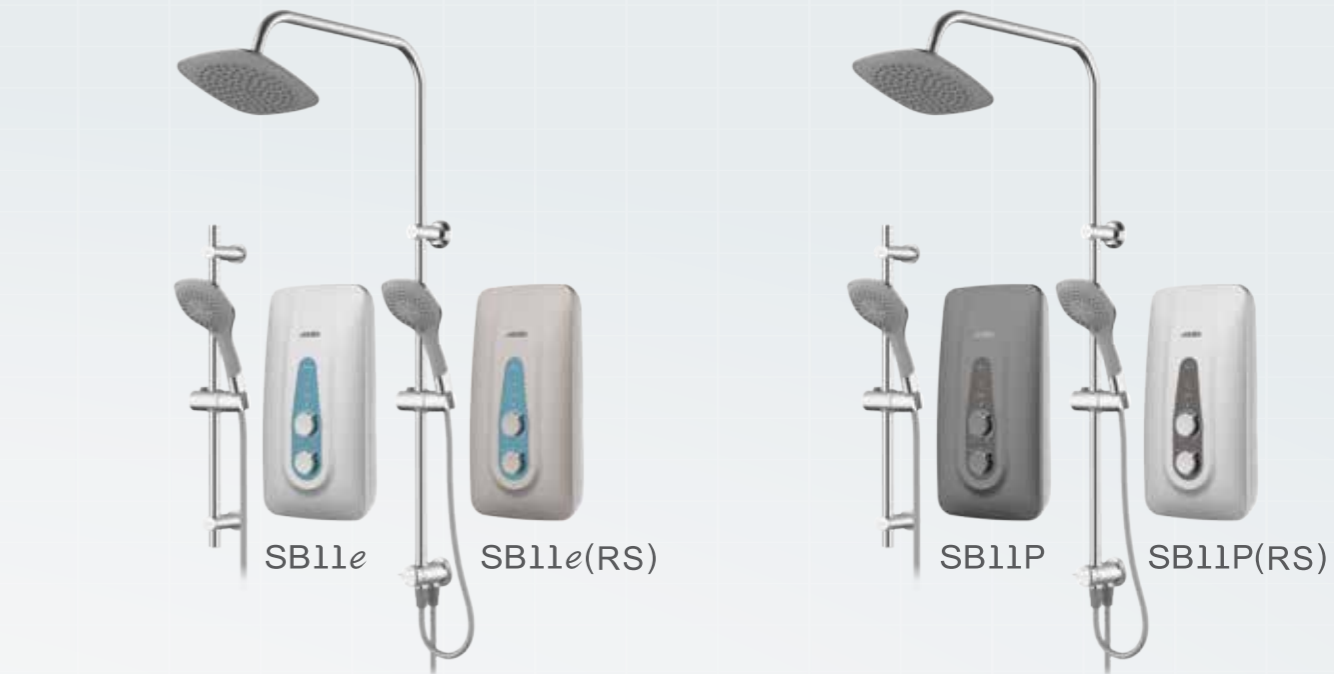
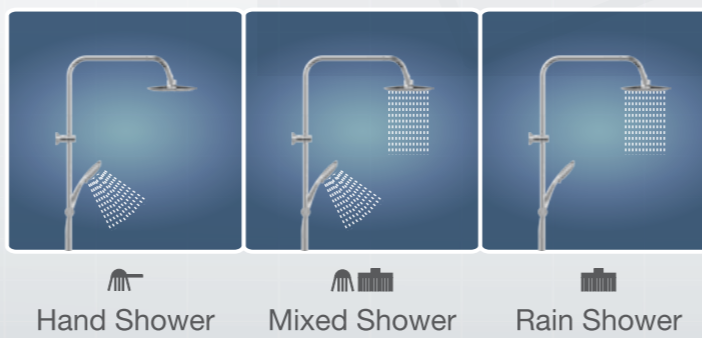
## SLIM SLIDER BAR SET

Slim and unique Slider Bar. Just press to set the Hand Shower to your ideal position.

**1 YEAR WARRANTY**  
INTERNAL PARTS  
• 1 Year Warranty On Internal Parts

**SERVICE ASSURED**  
• After-Sales Service Assured  
• Door To Door  
• Spare Parts Available

## SELECTOR VALVE



## SPECIFICATION

Electrical Loading	3.6 kW 15.0 A 240 Va.c. 50Hz
Min. Water Pressure	10 kPa / 1.45 psi / 0.1 bar
Max. Water Pressure	380 kPa / 55 psi / 3.8 bar
Min. Water Flow	2 Litres per Minute
Max. Water Flow	8 Litres per Minute
Water Temp. Control	Stepless Electronic Power Control
Inlet / Outlet Connection	ø15 mm (1/2" BSP) - Single Point System
Dimensions	213 x 405 x 81 mm
Weight	SB11e: 2.90 kg & SB11e(RS): 4.20 kg   SB11P: 3.70 kg & SB11P(RS): 5.00 kg

## INNOVATIVE AND SAFETY FEATURES

<p><b>Built-in Double Pole EELS System</b></p> <ul style="list-style-type: none"> <li>• 10mA Sensitivity</li> <li>• Surge Protector</li> <li>• Test / Reset Safety Functions</li> </ul>	<p><b>Turbo Booster Pump PAT.PEND. (SB11P &amp; SB11P(RS) only)</b></p> <ul style="list-style-type: none"> <li>• Longer Reliability</li> <li>• Double Ball Bearings</li> <li>• Low Noise (Below 65dB)</li> <li>• Increase Shower Pressure</li> <li>• Built-In Thermal Cut-Out</li> <li>• Press On / Off Pump</li> </ul>	<p><b>On / Off Power Knob</b></p> <ul style="list-style-type: none"> <li>• Convenience</li> <li>• Electrical Safety Override</li> <li>• Energy Saving</li> </ul>
<p><b>Electronic Power Control</b></p> <ul style="list-style-type: none"> <li>• Stepless Electronic Power Control</li> <li>• Ideal Shower Temperature</li> <li>• Energy Saving</li> </ul>	<p><b>Innovative SF Valve</b></p> <ul style="list-style-type: none"> <li>• ¼ Turn Ceramic Valve</li> <li>• Stop And Control Water Volume</li> <li>• Built-In Filter</li> <li>• Water Saving</li> </ul>	<p><b>Safety Thermostat / Thermal Cut-Out</b></p> <ul style="list-style-type: none"> <li>• Anti Scalding</li> <li>• Overheating Protection</li> <li>• Prevents Fire Hazard</li> </ul>
<p><b>Splash Proof Casing IP25</b></p> <ul style="list-style-type: none"> <li>• Against Water Splash</li> <li>• Against Access To Hazardous Parts</li> <li>• Safety Certified</li> </ul>		