

Innovative Heat Elevator Technology

Heat Elevator (HE) technology is the world's first innovation that uses patent pending magnetic device that accelerate the convective heat transfer and improve heat stratification in water. The magnetic device is uniquely designed to weaken the inter-molecular bonding energy and accelerate the movement of water molecules to improve heating efficiency.



HEAT ELEVATOR
ENERGY SAVING DEVICE

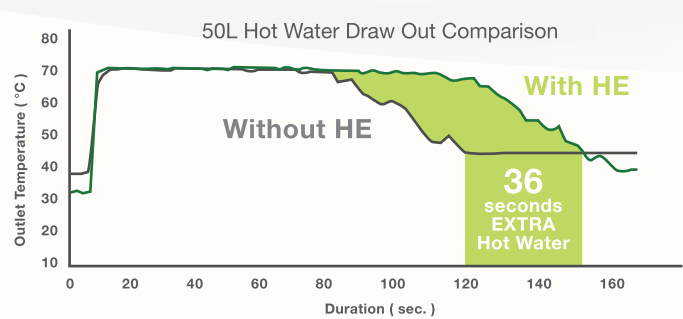
LOWER ENERGY USE WITH JOVEN HEAT ELEVATOR

Saves Energy Up To 20%

Enjoy lower electricity bills while contributing to a cleaner and greener lifestyle for you and your family. The HE storage water heater saves electrical energy consumption by up to 20% compared to conventional storage water heater. This innovative green technology is widely recognised by the leading certification bodies in Singapore.

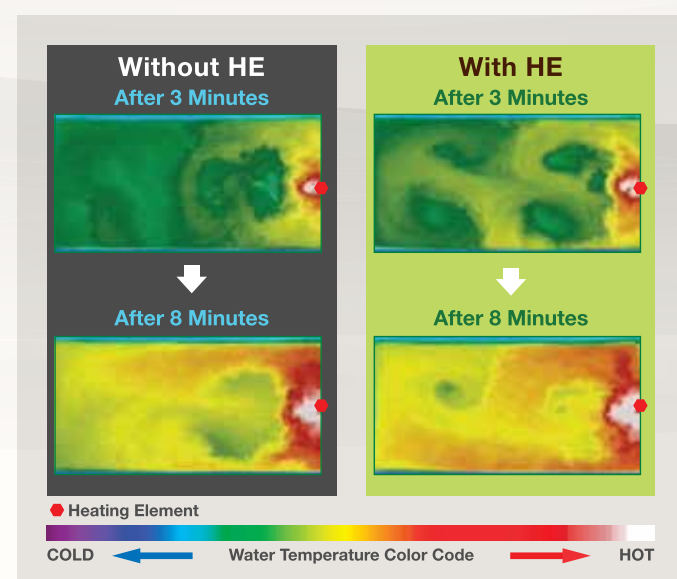
Tank	38L	56L	68L	91L
Energy Efficiency Improvement	9%	27%	15%	17%

The HE storage water heater ensure more consistent, uninterrupted and longer flow of hot water. The magnetic device is uniquely designed to weaken the inter-molecular bonding energy and accelerate the movement of water molecules ensuring faster initial heating time.



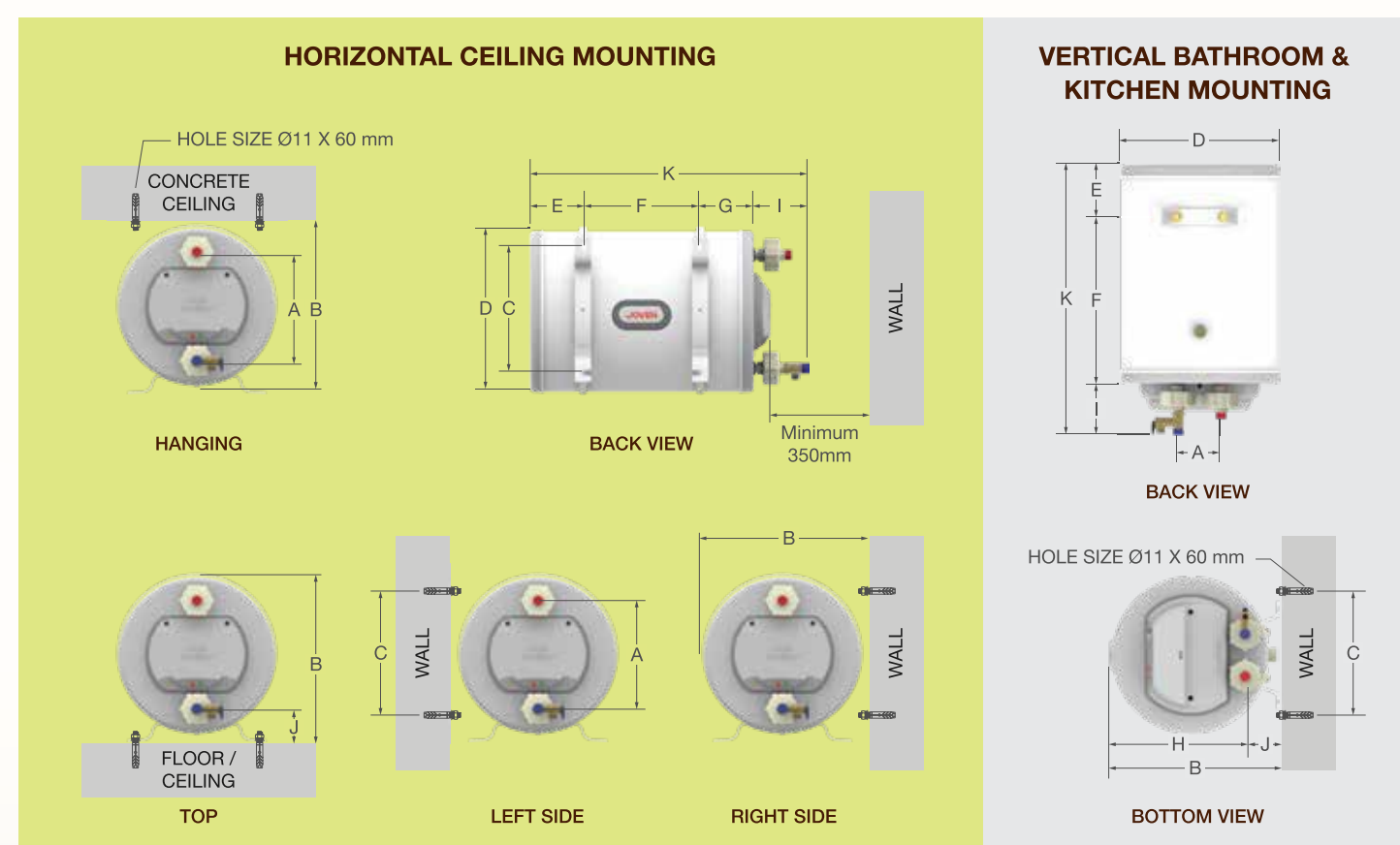
How Does It Work?

The comparative photos below shows the effect of HE which cause more heat loops than conventional storage water heater. The heated water is spread wider across the heater tank, thus ensuring less heat trapped at the heating element and therefore prolong the heating element life.



Note:
1. Test results are courtesy from TÜV SÜD PSE PTE LTD.
2. Test method is based on USA test guidelines (DOE 10 CFR Part 430) as specified by Singapore Standard (SS 530 : 2006)
3. Incoming water condition : temperature 14.4°C, pressure 2.75 bar & flow rate 11.4 Litre/min.
4. Result varies and are based on 15L to 91L capacities.
5. Available for JH models only.

Installation Dimension



Model	Tank Capacity Litre (Imp. Gall)	Dimensions (mm)										Time Taken To Heat * (Minutes)	Approx. Wt. Kg (Empty/Full)	
		A	B	C	D	E	F	G	H	I	J			K
JH 15	15 (3.3 Imp. Gals)	260	405	265	381	96	70	96	-	130	92	392	15	10 / 25
JH 25	25 (5.5 Imp. Gals)	260	405	265	381	121	150	121	-	130	92	522	20	12 / 37
JH 35	35 (7.7 Imp. Gals)	260	405	265	381	121	269	121	-	130	92	641	30	14 / 49
JH 50	50 (11.0 Imp. Gals)	260	405	265	381	121	438	121	-	130	92	810	45	17 / 67
JH 68	68 (15.0 Imp. Gals)	260	405	265	381	121	648	121	-	130	92	1020	60	20 / 88
JH 91	91 (20.0 Imp. Gals)	260	405	265	381	121	914	121	-	130	92	1286	80	25 / 116
JVA 25	25 (5.5 Imp. Gals)	100	393	217	372	121	271	-	316	130	77	522	20	12 / 37
JVA 35	35 (7.7 Imp. Gals)	100	393	217	372	121	390	-	316	130	77	641	30	14 / 49
JVA 50	50 (11.0 Imp. Gals)	100	393	217	372	121	559	-	316	130	77	810	45	17 / 67

* Approximate time taken to heat up to 70°C. Inlet water temperature at 27°C. (3kW / 240V)

SOLE DISTRIBUTOR FOR MALAYSIA

JOVEN MARKETING SDN. BHD. (109919-v)
Lot 2829, Jalan Sungai Kelkati 32/148, Off Jalan Sri Gembut, Seksyen 32, 40460 Shah Alam, Selangor Darul Ehsan, Malaysia.
Tel : +603 5162 6633 (Hunting Line)
Fax : +603 5162 6636 (General)
Email : jovernkt@joven.com.my
Website : www.joven.com.my

MANUFACTURER

JOVEN ELECTRIC CO. SDN. BHD. (107915-0)
Lot 2829, Jalan Sungai Kelkati 32/148, Off Jalan Sri Gembut, Seksyen 32, 40460 Shah Alam, Selangor Darul Ehsan, Malaysia.
Tel : +603 5162 8000
Fax : +603 5162 1881
Email : admin@joven-electric.com
Website : www.joven-electric.com

Authorised Dealer

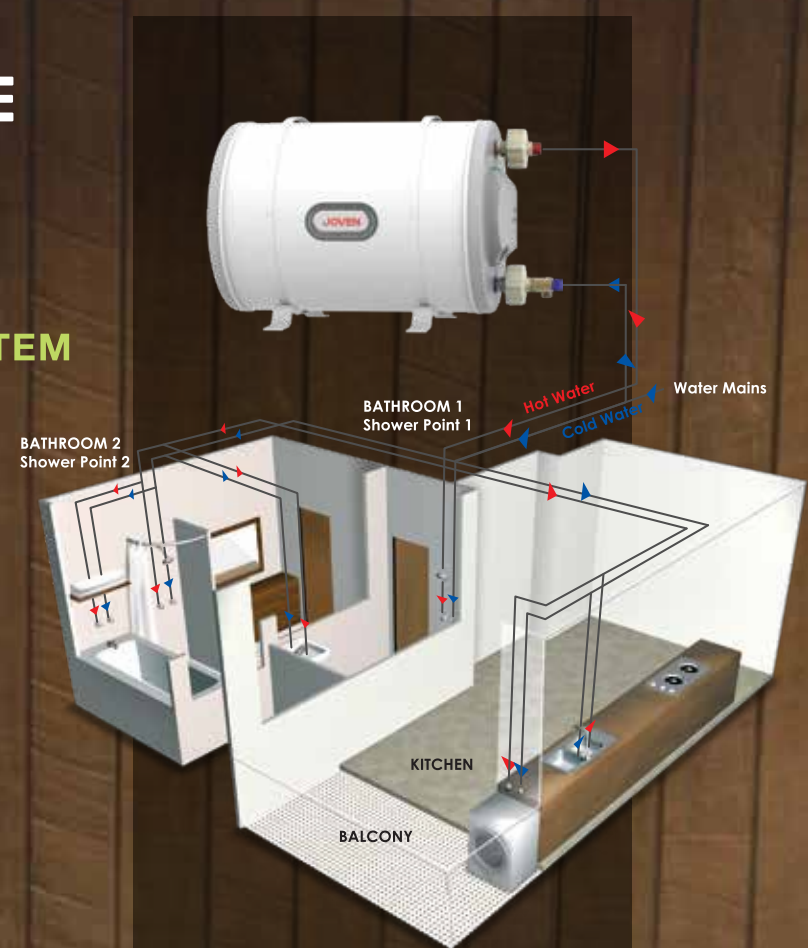
Pictures are for illustration purpose only. Model outlook and specification may change in the future without prior notice.

www.joven.com.my

YOUR RELIABLE HOT WATER SOLUTION

CENTRALISED MULTI-POINT SYSTEM FOR YOUR ENTIRE HOME

With leading cutting edge and technical expertise manufactured according to certified standards, JOVEN storage water heater is the preferred choice for hotter water solution throughout your home. From your shower or bathtubs, sink or kitchen basins, JOVEN storage water heater delivers reliable hot water supply whenever you need.



ENHANCED SAFETY

With Quad Safety System (QSS)

Peace of mind with built-in protection technology designed for prolong usage.

- Safety Pressure Relief and Drain Valve
- Thermostat With Built-In Safety Cut-Out
- Thermal Cut-Off
- Isolation Barrier



POWERFUL

- Delivers up to 70°C of hot water
- Allow sharing between points
- Standard wattage 3kW / 240V



EASY MOUNTING

- Patented Universal Mounting Ring Bracket (For JH Only)
- Flexible to all horizontal positions (Left, Right, Hanging and Top Mounting)



DURABLE

Built from high quality material that withstand rust and rupture ensure long-lasting life and stellar performance.

- Stainless Steel Tank
- Electro-Galvanised Steel Epoxy Coated Enclosure
- High Quality Engineering Plastic



GREEN INNOVATION

- Heat Elevator Technology saves energy by 20%
- Environmental Friendly CFC Free High Density Polyurethane Foam for maximum saving



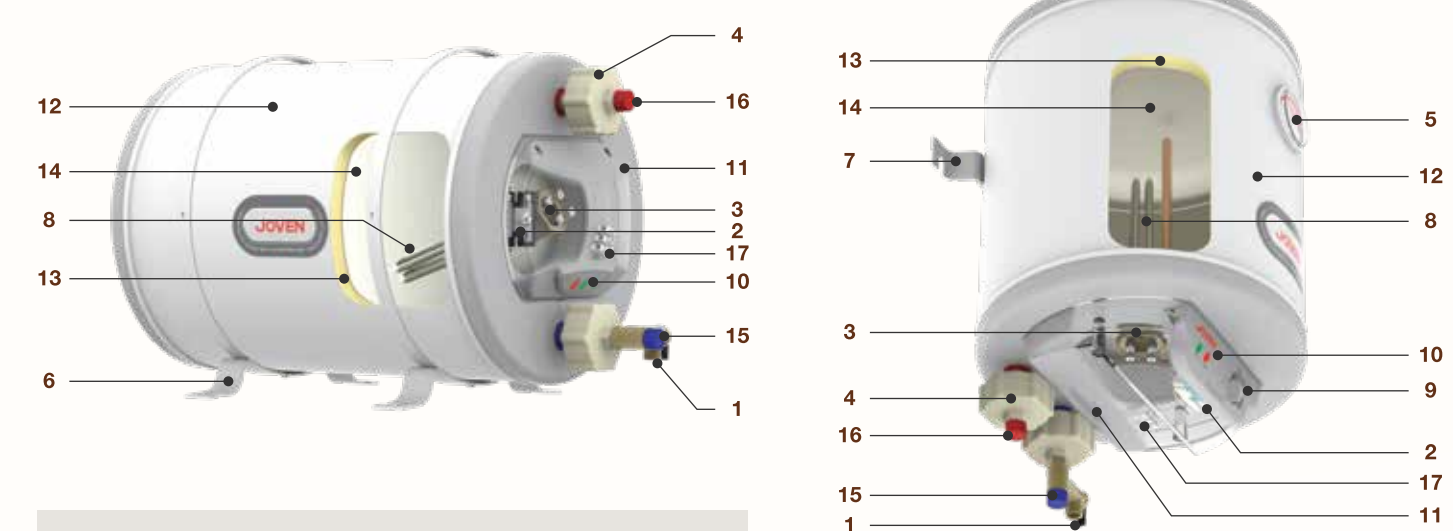
JH SERIES Horizontal Ceiling Mounting



JVA SERIES Vertical Bathroom & Kitchen Mounting



Identification Details



JOVEN Quad Safety System (QSS)

- Safety Pressure Relief and Drain Valve**
 - The safety pressure relief is preset to 10 bars to relief excessive pressure build-up in heater tank during heating process.
 - Built-in drain valve to facilitate water drain out during pressure relief or servicing.
- Thermostat**
 - Surface mount thermostat (For JH only)
 - Preset to 70°C for maximum ready to use hot water.
 - Built-in safety cut-out at 95°C.
 - Energy Saving.
 - Adjustable thermostat (For JVA only)
 - Conveniently set your ideal water temperature from "OFF" to "HIGH". (LOW, MEDIUM and HIGH)
 - Built-in safety cut-out at 95°C.
 - Energy Saving.
- Thermal Cut-Off**
 - Protect the heating element from dry burnt when heater tank is not filled with water.
 - Overheating protection and prevent fire hazard.
- Isolation Barrier**
 - A safety device to prevent electrocution.
- Thermometer (For JVA only)**
 - Indicate the water temperature in the heater tank.
 - Convenience.
- Patented Universal Mounting Ring Bracket (For JH only)**
 - Allowing flexibility in mounting the heater in any horizontal positions.
 - Anti-rust treated and epoxy coated for better durability.
 - Safer mounting with expansion bolts.
- Vertical Hook-on Bracket (For JVA only)**
 - Snap-hook design for easy installation.
 - Anti-rust treated and epoxy coated for better durability.
 - Safer mounting with expansion bolts.
- Heating Element**
 - Stainless steel sheathed for high reliability.
 - High power for performance.
 - Low watt density for higher efficiency and reliability.
 - Easy to replace.
- Adjustable Temperature Control Knob (For JVA only)**
 - Conveniently set your ideal water temperature from "OFF" to "HIGH". (LOW / 40°C, MEDIUM / 55°C and HIGH / 70°C)
 - Energy saving.
- Dual Indicator Lamp**
 - Green : MAINS
 - Red : HEATER
- Installation Cover**
 - High quality flame retardant ABS plastic.
 - Easy access for service.
- Heater Enclosure**
 - Electro-galvanised steel and anti-corrosion treated.
 - Then epoxy coated for better durability.
- Insulation Foam**
 - High density CFC free polyurethane foam of 2.5 lb per cu.ft to prevent heat loss, thus saves electrical energy.
- Stainless Steel Heater Tank**
 - Thick gauge stainless steel to withstand rust and rupture.
 - Designed to 20 bars to ensure no water leakage.
 - 5-years leak proof warranty.
- Stainless Steel Inlet Pipe 1/2" BSP**
- Stainless Steel Outlet Pipe 1/2" BSP**
- 3-Way Wire Connector**

Capacity Recommendation Simultaneous (Usage All Points At Once)

CAPACITY	NORMAL SHOWER (6-10 cm / 2-4 inches)		RAINSHOWER (15-30 cm / 6-12 inches)	
15 Litres	• 1 Wash Basin Only			
25 Litres	• 1 Kitchen Sink	OR	• 1 Normal Shower	
35 Litres	• 1 Normal Shower	AND	• 1 Wash Basin	• 1 Rain Shower 6"
50 Litres	• 2 Normal Shower		• 1 Rain Shower 6"	AND • 1 Wash Basin
68 Litres	• 1 Long Bath	OR	• 3 Normal Shower	• 1 Rain Shower 10"
91 Litres	• 1 Jacuzzi	OR	• 1 Washing Machine	• 1 Rain Shower 10"
	• 1 Long Bath	AND	• 1 Normal Shower	• 1 Rain Shower 6"